

THE TRACK AHEAD...

2023 GOALS

Education: Prepare and install interpretive exhibit materials for display in the Switch Tower building

Community Engagement: Recruit and facilitate a Marketing Task Force which will include members of the community who have marketing expertise. Implement marketing recommendations of the Task Force.

Preservation: Prepare track and freight cars to be used to display a Reading Railroad freight train for the education of visitors.

Your help is needed!

Funds are needed to continue to extend track in the area of the railcar protection building and for preparing exhibits in the new switch tower building.

Contributions may be sent to:

RCT&HS

PO Box 15143

Reading, PA 19612-5143

Or contact us at museum@readingrailroad.org

2022 RCT&HS Board of Directors:

Duane Engle, president

Tom Brown, first vice president

Robert Biamonte, second vice president

Frank Scalise, secretary

James Adams, treasurer

Donald Crabtree, director

Stephen Gilbert, director

Michael Huber, director

Dale Woodland, director



ANNUAL REPORT

2022



The shell of the new switch tower replica was delivered to the Reading Railroad Heritage Museum on November 29, 2022.

The mission of the Reading Company Technical and Historical Society is to document, collect, preserve, exhibit, and interpret equipment, artifacts, archives, and history related to the Reading Railroad, its predecessors, successors and subsidiaries and the communities it served for the education, safety awareness, and enjoyment of its members and the public.

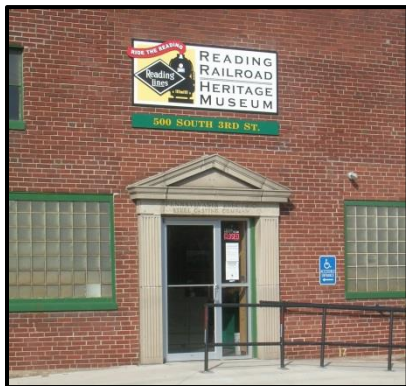
The Reading Railroad Heritage Museum
500 S. Third St.
Hamburg, PA 19526
www.readingrailroad.org



The Reading Railroad Heritage Museum, a nationally recognized resource, is the educational and interpretive center for the extensive collections of the Reading Company Technical and Historical Society. Displays, video, hands-on experiences, and events illustrate the impact of the Reading Railroad on southeastern Pennsylvania and beyond from its beginning in 1833 until the end of its era in 1976. The Museum is operated entirely by the RCT&HS, an all-volunteer non-profit corporation, whose efforts have assembled the collections and built the museum.

Museum visitors can go outdoors to see over 70 pieces of historic Reading Railroad locomotives, freight and passenger cars, one of the largest collections in the U.S. pertaining to a single railroad. The exhibit building features tools, machines, documents, uniforms, and many other items used by Reading Railroad workers. Model trains and a re-created station agent's office are popular attractions. Exhibits on a variety of railroad subjects change seasonally. A 15-minute video, "The Reading Railroad Shaped Communities", is shown in the Museum theater. Books, clothing, model

trains, children's toys, and treasures for rail enthusiasts of all ages are available at the Museum store. The Museum is open Saturdays from 10 AM to 4 PM and Sundays from noon to 4 PM. Weekday tours for school and community groups are available by appointment. Researchers may study by appointment in the extensive archive of Reading Railroad maps, photos, and documents.



The RCT&HS by the numbers

Membership 2022:

Individual: 490 Family: 95
 Contributing: 198 Sustaining: 83
 Corporate: 17 Full-time Student: 9
Total memberships: 792 Of these, 46 were new members.
All members received 12 monthly newsletters, *The Crusader*, and 4 issues of *The Beeline*.

Service:

More than 80 volunteers gave at least 9,000 hours of service.

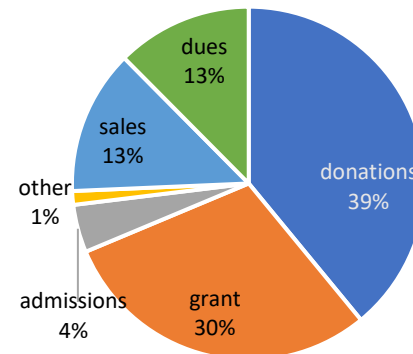
Visitors:

2797 persons visited the Museum in 2022.

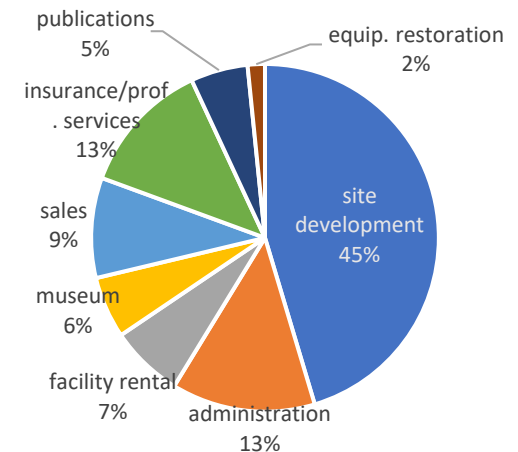
In addition, visitors at the RCT&HS modular display: Timonium Train meet, 3800; Reading Days at the RR Museum of PA (a 10-day event), 4100; Pennsylvania Christmas Show (a 5-day event) +/- 10,000.

Finance: Donations exceeding membership dues were received from 335 individuals, families, and businesses.

INCOME \$337,333



EXPENSES \$290,487





In late 2021, the RCT&HS was approved to receive a grant from the Pennsylvania Department of Economic Development for \$100,000. The funds were used during 2022 for three projects. All three projects will enhance the experience of guests at the Reading Railroad Heritage Museum.

Track building: acquisition of track materials for continuation of track toward the railcar protection building and for repositioning Grill Car #2060 to allow space for that track.

Restroom acquisition: a self-contained 2-stall restroom for accessible visitor comfort during attendance at events, tours, and educational events taking place in locations away from the exhibit building.

Switch tower construction: funding for the shell of a 14 ft. x 40 ft. building resembling the Reading Railroad’s Race St. switch tower where artifacts from that building will be displayed and interpreted.

Museum Operations: The museum exhibit for 2022, “What’s in that Freight Car”, showed the Reading’s influence on the business and economy of its territory.



The highlight of the year was two weekends of LEGO Train Days which drew more than 600 visitors.

Custom-designed Reading railroad operating LEGO trains and historic LEGO models traced the history of these trains back to the 1930’s.



The new Switch Tower exhibit, which will display the Race St. tower console, was placed and interior work begun.

Grill car #2060 was repositioned to allow track work to proceed. Docents expertly represented the RCT&HS to the public.

Nostalgic Christmas Trains attracted visitors during the holiday season. A bridge formerly displayed at Roadside America was included.



Dale Woodland, chair



The **Archives Committee** continued the long-term tasks of organizing, cataloging and scanning the RCT&HS’ collections of documents, drawings and photographs, and answered numerous inquiries for historical information.

Rick Bates, chair

Track and Grounds volunteers completed 450 feet of new track and a #6 turnout during 2022. Also, track was realigned and rolling stock was repositioned. The location for the placement of the switch tower display building was prepared.

Duane Engle, chair

The volunteers of the **Building Committee** prepared the location for the new portable restroom and put it into service.



They designed and oversaw the installation of the new portable switch tower. A new access ramp for the use of Modular and Artifacts committees was designed and built. Transformer, conduit, and outlets were installed to meet the electrical power requirements of the railyard. Electrical improvements for the compressor

room, tow truck garage, and grill car were also made. Other work included preparation and supervision for the grill car relocation, roof repair, support of exhibit installation, and reorganizing the maintenance shop.

Don Crabtree, chair

Motive Power and Rolling Equipment: Reading Grill Car #2060 was relocated to clear the path for extension of track.

Grill Car #2060 moving to its new position



Restoration work focused on locomotives GP30 #5513 and RS-3 #485. Locomotives #3412 and #103 were maintained as serviceable locomotives. Parts and tool storage improvements were made in the bus barn, shop area, and parts storage boxcar. The Reading boxcar that holds several Reading interlocking consoles was updated with new displays for visitors. Vulnerable railcars including business car #15 were moved into the Railcar Protection Building. MP&RE volunteers also contributed to track construction work.

Mike Huber and Paul Payne

The **Modular Committee** attended the Greenberg's Show in Oaks in January, 2022. Updating scenery and improving both the signals and DCC continued on individual modules. In February, the Modular Committee participated at the Great Scale Model Train Show in Timonium. A first for 2022 was the invitation from the Railroad Museum of PA to exhibit for two weeks during Reading Days, which was accepted and was the first time the modular was set up at 160 feet long. In October the modular returned to Timonium and, in December, returned to Harrisburg for the Pennsylvania Christmas Show.



Karen Confer, chair

The "high and wide" train traveling east through Dana Corp.



The 10th annual **Reading Railroad Modelers Meet** was held in September. Seventy attendees and vendors and 20 spectators registered. The event included ten interesting clinics and three great layout tours. Thanks to the Reading and Northern Railroad, a special feature was an extended visit to the Reading T-1 #2102 at the R&N steam shop.

Barry Hensel, chair